

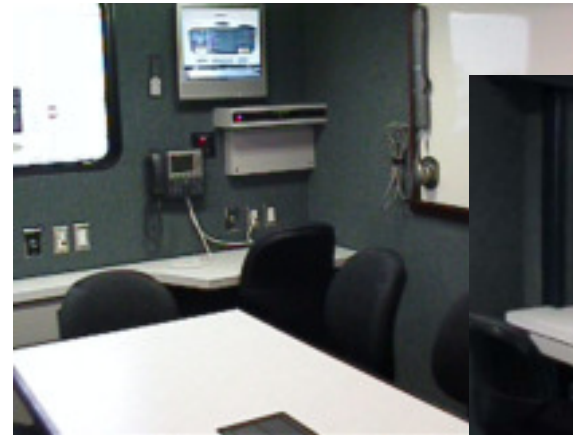
# **MBF Industries, Inc.**

*Since 1992*

## **City of Annapolis, Md. Incident Command Vehicle**



Freightliner M2, 335HP CAT, 35,000 lb. GVWR, 252" W.B., Walk through cab, Custom all aluminum body (2'x2"x16"O.C.x .125 skin), (2) slide outs, OPERATIONS AREA: (4) workstations with streetside slide out, COMMON AREA: Electric toilet, Galley with refrigerator, microwave and coffee maker, CONFERENCE ROOM: Seating for eight (8), (1) scribe position, Slide out, 42" Smartboard with plazma, 30' mast with camera, Roof observation platform, Exterior workstation, Weather station, Emergency light package, 20KW generator, TracStar satellite system, (2) Kwik Raze lights, (1) equipment rack with exterior I/O panel , AWINS Interoperability Solution



407-323-9414—[www.mbfindustries.com](http://www.mbfindustries.com)  
210 Tech Dr., Sanford, FL 32771